

Westfalenstoffe AG

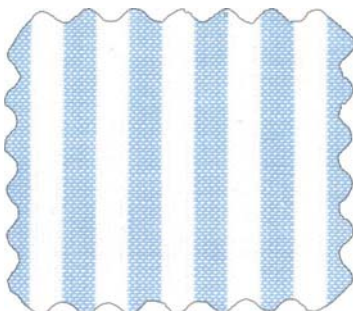
Albrecht-Thaer-Str. 2 • D - 48147 Münster
Tel +49 (0)251 92805 0 • Fax +49 (0)251 92805 55
www.westfalenstoffe.de



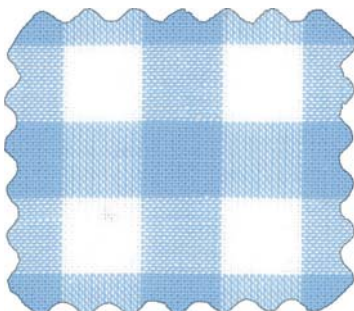
30 **Capri**
01 / 2011



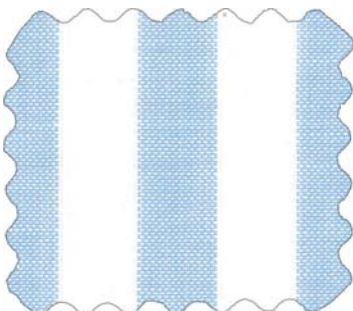
W422900



W422950



W423000



W423050



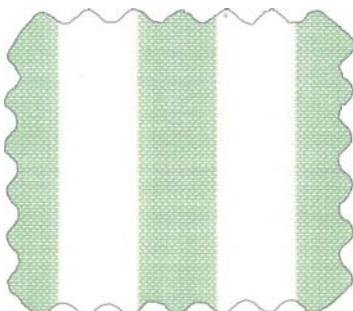
W423700



W423750



W423600



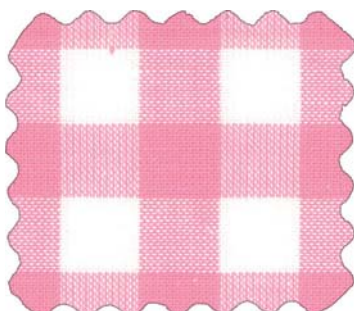
W423650



W423200



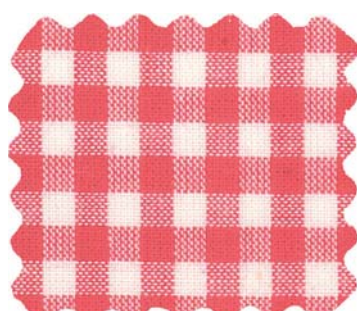
W423250



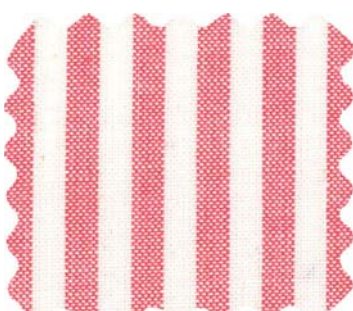
W423100



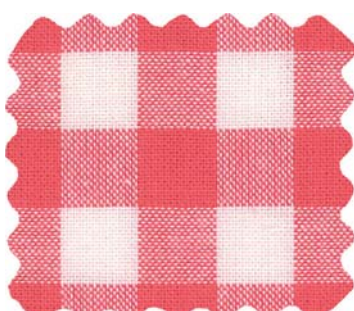
W423150



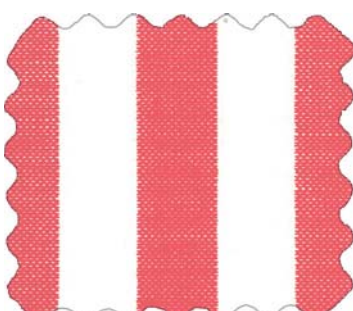
P341200



P341250



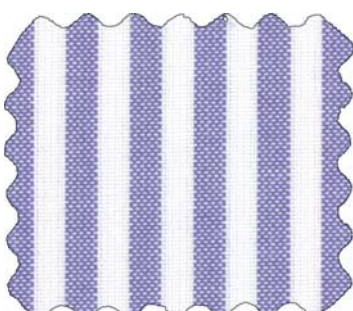
P-BB3300



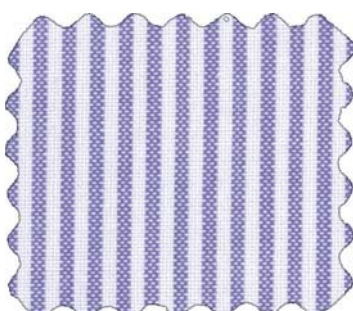
P-BB3350



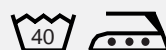
W4341400



W4341450



Technische Angaben: Material: 100% ägyptische Baumwolle • Breite: ca. 150 cm • Gewicht: ca. 140 g/qm
Bindung: Flachgewebe 1/1 • Lichtechtheit Webstoffe: 6 • Lichtechtheit Druckstoffe: 4 • Aufmachung: doubliert
Die auf dieser Seite abgebildeten Stoffe sind zertifiziert nach **Oeko-Tex® Standard 100**

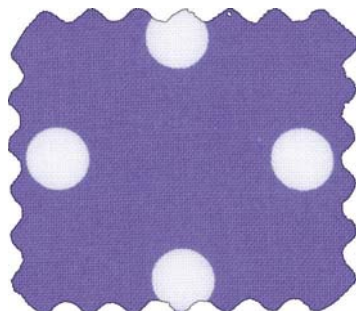


Westfalenstoffe AG

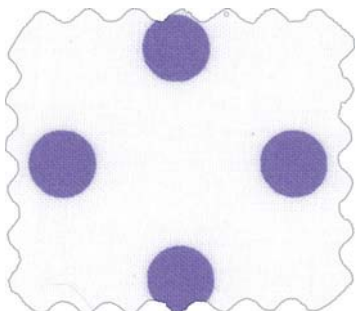
Albrecht-Thaer-Str. 2 • D - 48147 Münster
Tel +49 (0)251 92805 0 • Fax +49 (0)251 92805 55
www.westfalenstoffe.de



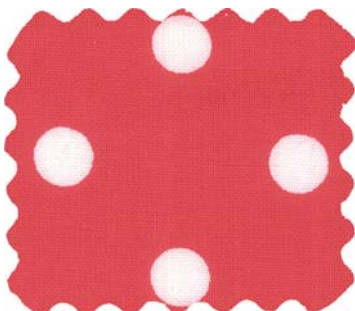
30 **Capri**
01 / 2011



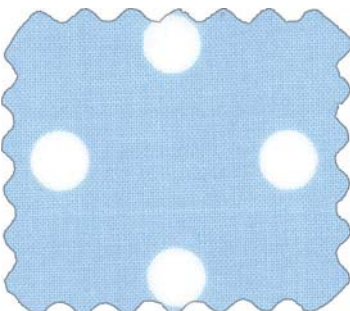
10506216



10506217



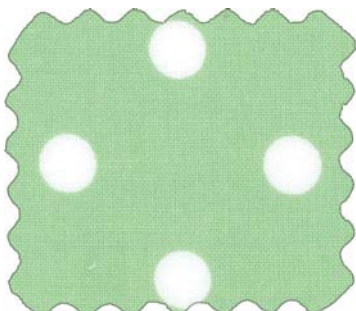
10506206



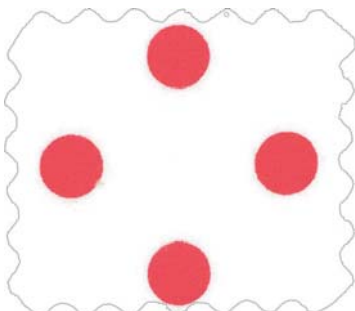
10506208



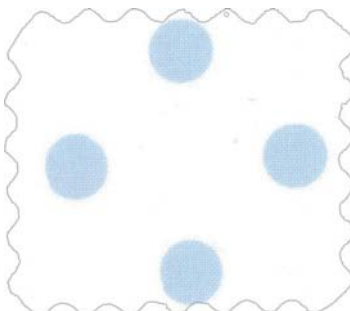
10506209



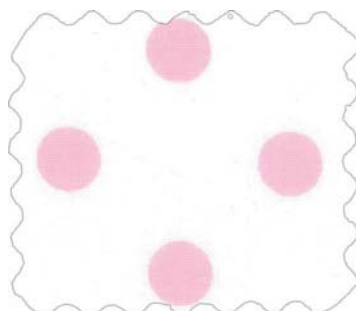
10506210



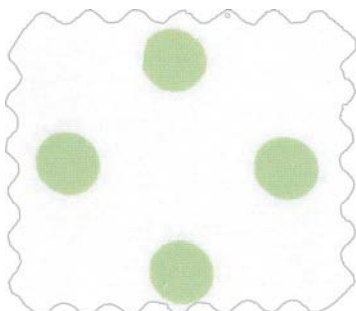
10506212



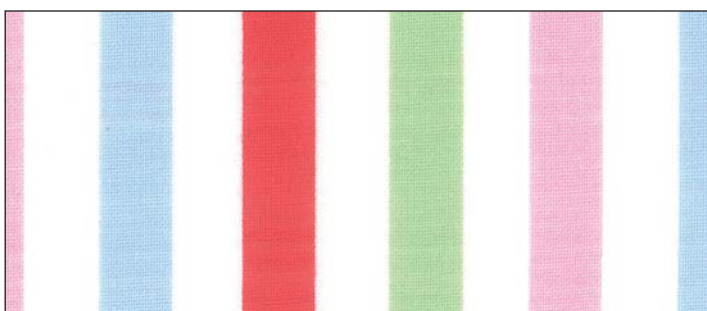
10506213



10506214



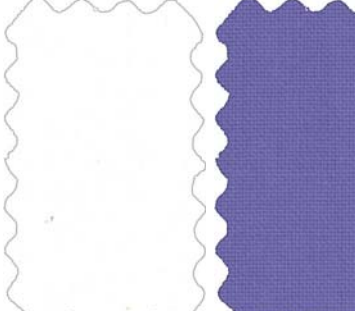
10506215



10506211



10507163



10505195



1973415 - Schrägband
VE=27 m



1973016 - Schrägband
VE=50 m



10507162 (Abb. verkleinert)



10507164 (Abb. verkleinert)

Technische Angaben: Material: 100% ägyptische Baumwolle • Breite: ca. 150 cm • Gewicht: ca. 140 g/qm
Bindung: Flachgewebe 1/1 • Lichtechtheit Webstoffe: 6 • Lichtechtheit Druckstoffe: 4 • Aufmachung: doubliert
Die auf dieser Seite abgebildeten Stoffe sind zertifiziert nach **Oeko-Tex® Standard 100**

